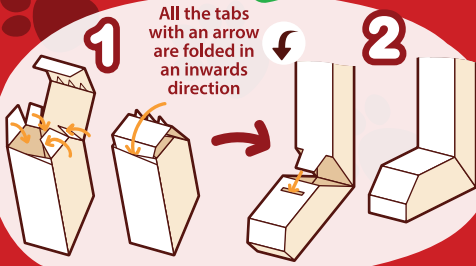


NEW TIGER

Assembly instructions

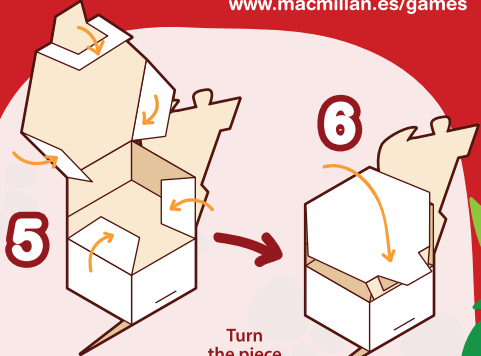
This New Tiger puppet consists of 4 pre-assembled pieces. You can either follow the simple steps shown here or view a video tutorial of how to assemble the New Tiger puppet at the following link: www.macmillan.es/games



Take the body and press it into shape, then slide it over the legs into place



The tops of the legs should remain in a diamond shape



Turn the piece over

Remove the protective seal from the double-sided tape



Stick

Remove the protective seal from the double-sided tape



Fix in place



Remove the protective seal from the double-sided tape and stick